



| | |
|-------------------------|--------------------------------------|
| Engine | Cummins 6LTAA9.3 |
| Rated Power | 162 kW (217 hp / 220 ps) @ 2,200 rpm |
| Blade Width | 4,270 mm |
| Maximum Speed | 42 km/h |
| Draw Bar Pull | 85 kN |
| Operating Weight | 16,500 kg |

4215D MOTOR GRADER

4215D SPECIFICATIONS >>>

ENGINE

| | |
|---------------------|--------------------------------------|
| Emission Regulation | Tier 2 / Stage II |
| Make | Cummins |
| Model | 6LTA A9.3 |
| Rated Power | 162 kW (217 hp / 220 ps) @ 2,200 rpm |
| Maximum Torque | 984 N·m |
| Number of Cylinders | 6 |
| Aspiration | Turbo & air-to-air intercooled |

TRANSMISSION

| | |
|---------------------------|-------------------------------|
| Transmission Type | Power shift |
| Torque Converter | Three - member single turbine |
| Maximum Travel Speed, fwd | 42 km/h |
| Maximum Travel Speed, rev | 26.2 km/h |
| Number of Speeds, fwd | 6 |
| Number of Speeds, rev | 3 |

AXLES

| | |
|------------------------------|-----------------------|
| Differential Type | Limited slip standard |
| Final Drive Type | Chain drive |
| Axle Oscillation | ±16° |
| Front Axle, Wheel Lean Angle | Left / right ±18° |

STEERING

| | |
|--------------------------|---------------------------|
| Steering Configuration | Load sensor steering gear |
| Steering Relief Pressure | 16.7 MPa |
| Minimum Turning Radius | 7,200 mm |
| Steering Angle | ±50° |
| Frame Articulation Angle | ±27° |

BRAKES

| | |
|------------------------|-----------|
| Service Brake Type | Shoe |
| Service Brake Location | Rear axle |

TIRES

| | |
|-----------|---------|
| Tire Size | 17.5-25 |
|-----------|---------|

HYDRAULIC SYSTEM

| | |
|----------------------|-----------|
| Main Pump Type | Gear |
| Main Relief Pressure | 20 MPa |
| Main Pump Flow | 122 L/min |

WORKING CAPACITIES

| | |
|-------------------|----------|
| Maximum Draw Pull | 85 kN |
| Cutting Pressure | 8,150 kg |

TANDEM DRIVE PERFORMANCE

| | |
|-----------------|----------|
| Height | 600 mm |
| Width | 210 mm |
| Center Distance | 1,538 mm |

MOLDBOARD PERFORMANCE

| | |
|----------------------------------|--------------|
| Bank Cut Angle | 28~74° |
| Moldboard Lift Above Ground | 570 mm |
| Moldboard Side Shift, left/right | 635 / 765 mm |
| Maximum Sloping Angle | 90° |
| Cutting Depth | 736 mm |
| Circle Rotation | 360° |
| Circle Diameter | 1,455 mm |
| Circle Thickness | 140 mm |

DIMENSIONS

| | |
|------------------------------|----------|
| Wheelbase | 6,230 mm |
| Overall Length | 9,090 mm |
| Overall Height with Cab | 3,380 mm |
| Clearance under Front Axle | 602 mm |
| Moldboard Standard Length | 4,270 mm |
| Moldboard Standard Thickness | 19 mm |
| Moldboard Standard Height | 645 mm |

OPERATING WEIGHTS

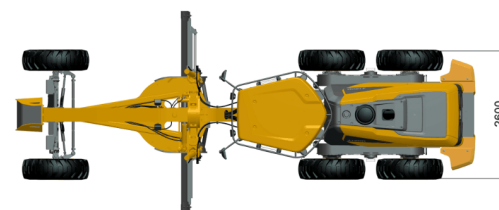
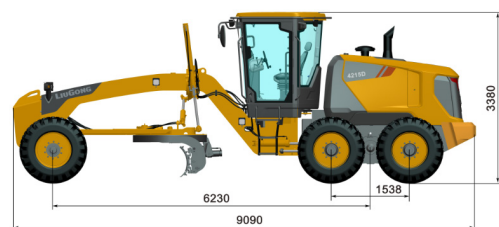
| | |
|------------------|-----------|
| Operating Weight | 16,500 kg |
|------------------|-----------|

SERVICE CAPACITIES

| | |
|-----------------------------------|-------|
| Fuel Tank | 348 L |
| Engine Oil | 19 L |
| Cooling System | 35 L |
| Hydraulic Reservoir | 165 L |
| Transmission and Torque Converter | 33 L |
| Tandems, each | 26 L |

OPTIONAL EQUIPMENT

| |
|---------------------------|
| Rear Ripper |
| Front Dozer |
| Automatic Leveling System |
| Rotary Beacon |
| Frictional Flake Worm Box |



Unit : mm

Guangxi Liugong Machinery Co., Ltd.

No. 1 Liutai Road, Liuzhou, Guangxi 545007, PR China
T: +86 772 3886124 E: overseas@liugong.com
www.liugong.com

Specifications and designs are subject to change without notice. Machines shown may include optional equipment. LiuGong standard and optional equipment may vary from region to region. Please consult your LiuGong dealer for information specific to your area. Engine power kW is converted to horsepower (1 kW=1.3596 ps and 1 kW=1.3410 hp) in this file.

01/2021 Designed by LiuGong
Replace the previous versions of 06/2020