



Engine	Perkins 1104D-44TA
Gross Power	74.5 kW (100 hp / 101 ps) @ 2,200 rpm
Net Power	72 kW (97 hp / 98 ps) @ 2,200 rpm
Maximum Speed	36 km/h
Standard Loader Bucket Capacity	1.0 m ³
Standard Backhoe Bucket Capacity	0.2 m ³
Operating Weight	8,400 kg

777A BACKHOE LOADER

TOUGH WORLD. TOUGH EQUIPMENT.

777A SPECIFICATIONS >>>

ENGINE

Emission Regulation	Tier 3 / Stage IIIA
Manufacturer	Perkins
Model	1104D-44TA
Gross Power	74.5 kW (100 hp / 101 ps) @ 2,200 rpm
Net Power	72 kW (97 hp / 98 ps) @ 2,200 rpm
Peak Torque	410 N · m @ 1,400 rpm
Displacement	4.4 L

ELECTRICAL SYSTEM

System Voltage	12 V
Battery Rating	95 amp-hr

DRIVE TRAIN

Number of Drive Wheels	2WD / 4WD
1st Maximum Speed, fwd/rev	5.9 km/h
2nd Maximum Speed, fwd/rev	10.7 km/h
3rd Maximum Speed, fwd/rev	20.5 km/h
4th Maximum Speed, fwd/rev	36 km/h
Turning Radius, outside of front tire	4,400 mm
Turning Radius, outside of bucket	5,554 mm

BRAKES

Service Brake Type	Wet disc
Service Brake Actuation	Hydraulic

TIRES

Front Tire Size	14-17.5NHS-14RP T
Rear Tire Size	19.5-24NHS-14PR T

HYDRAULIC SYSTEM

Circuit Type	Open
Total Flow	143 L/min
Main Relief Pressure	24 Mpa
Pump Type	Tandem gear pump
Steering Type	2 WS

OPERATING WEIGHTS

Operating Weight	8,400 kg
------------------	----------

LOADER PERFORMANCE

Standard Bucket Type (referenced)	General Load Bucket
Heaped Capacity ISO (referenced)	1.0 m ³
Standard Bucket Width (referenced)	2,260 mm
Lift Capacity at Full Height	30.2 kN
Bucket Breakout Force	59.3 kN
Maximum Dump Angle at Full Height	45°
Maximum hinge pin height	3,443 mm
Dump Reach at Full Height Discharge	713 mm
Boom Lift Capacity, end, at ground	49.3 kN
Maximum Dig Depth	89 mm

BACKHOE PERFORMANCE

Standard Bucket Type (referenced)	General Bucket
Heaped Capacity ISO (referenced)	0.2 m ³
Standard Bucket Width (referenced)	610 mm
Maximum Dig Depth	4,440 mm
Reach From Swing Pivot at Ground	5,443 mm
Turning Angle of Bucket	186°
Bucket Digging Force	58.2 kN
Dipper Digging Force, standard stick	37.5 kN
Loading Height	3,586 mm
Loading Reach from Swing Pivot	3,007 mm

SERVICE CAPACITIES

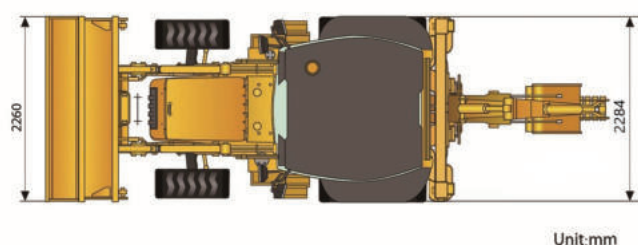
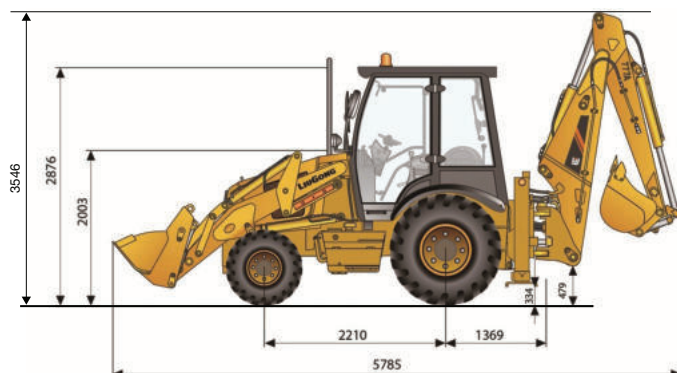
Fuel Tank	130 L
Engine Oil	7 L
Cooling System	23 L
Hydraulic Reservoir	130 L
Hydraulic System Total	170 L
Transmission and Torque Converter	16 L
Axle, front	5.5+0.7*2 L
Axle, rear	16 L

STANDARD EQUIPMENT

Perkins1104D-44TA Engine
Carraro Transmission
Open Cab, ROPS / FOPS
Auxiliary Hydraulic Kit
Carraro 4*2 Axles
Boom Interlock
General Purpose Bucket 1.0 m ³
Seat Belt

OPTIONAL EQUIPMENT

Enclosed Cab, ROPS/ FOPS, with AC
Rotary Beacon
Hydraulic Shear
Vibratory Tamper
Hydraulic Hammer
Carraro 4*4 Axles
4 in 1 Bucket 1.0 m ³
Telescopic Boom



Guangxi Liugong Machinery Co., Ltd.

No. 1 Liutai Road, Liuzhou, Guangxi 545007, PR China
T: +86 772 3886124 E: overseas@liugong.com
www.liugong.com

Specifications and designs are subject to change without notice. Machines shown may include optional equipment. Liugong standard and optional equipment may vary from region to region. Please consult your Liugong dealer for information specific to your area. Engine power kW is converted to horsepower (1 kW=1.3596 ps and 1 kW=1.3410 hp) in this file.

12/2024 Designed by Liugong
Replace the previous versions of 09/2022