



<b>Engine</b>	Weichai WP4G95E221
<b>Gross Power</b>	70 kW (94 hp / 95 ps) @ 2,200 rpm
<b>Net Power</b>	68 kW (91 hp / 92 ps) @ 2,200 rpm
<b>Maximum Speed</b>	36 km/h
<b>Standard Loader Bucket Capacity</b>	1.0 m <sup>3</sup>
<b>Standard Backhoe Bucket Capacity</b>	0.2 m <sup>3</sup>
<b>Operating Weight</b>	8,400 kg

# 777A BACKHOE LOADER

# 777A SPECIFICATIONS >>>

## ENGINE

Emission Regulation	Tier 2 / Stage II
Make	Weichai
Model	WP4G95E221
Gross Power	70 kW (94 hp / 95 ps) @ 2,200 rpm
Net Power	68 kW (91 hp / 92 ps) @ 2,200 rpm
Peak Torque	383 N · m @ 1,500 rpm
Displacement	4.5 L

## ELECTRICAL SYSTEM

System Voltage	12 V
Battery Rating	95 amp - hr

## DRIVE TRAIN

Number of Drive Wheels	2WD / 4WD
1st Maximum Speed, fwd/rev	5.9 km/h
2nd Maximum Speed, fwd/rev	10.7 km/h
3rd Maximum Speed, fwd/rev	20.5 km/h
4th Maximum Speed, fwd/rev	36 km/h
Turning Radius Outside of Front Tire with single braking	4,400 mm
Turning Radius Outside of Bucket with single braking	5,554 mm

## BRAKES

Service Brake Type	Wet disc
Service Brake Actuation	Hydraulic service

## TIRES

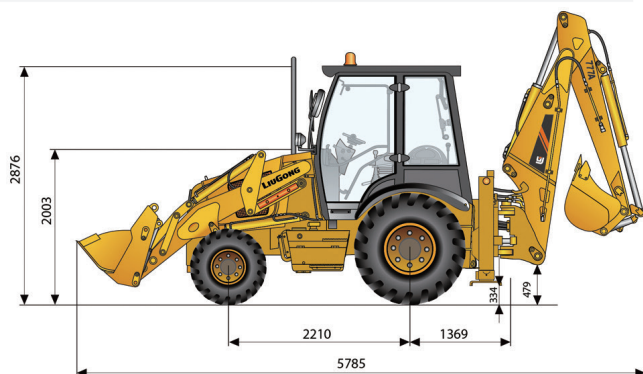
Front Tire Size	14-17.5NHS-14RP T
Rear Tire Size	19.5-24NHS -14PR T

## HYDRAULIC SYSTEM

Circuit Type	Open
Total Flow	143 L/min
Main Relief Pressure	24 MPa
Pump Type	Tandem gear pump
Steering Type	Priority valve

## OPERATING WEIGHTS

Operating Weight	8,400 kg
------------------	----------



## LOADER PERFORMANCE

Standard Bucket Type (referenced)	General purpose
Heaped Capacity ISO (referenced)	1.0 m <sup>3</sup>
Standard Bucket Width (referenced)	2,260 mm
Lift Capacity at Full Height	30.2 kN
Bucket Breakout Force	59.3 kN
Maximum Dump Angle at Full Height	45°
Dump Height at Maximum Angle	2,691 mm
Dump Reach at Full Height Discharge	713 mm
Boom Lift Capacity, end, at ground	49.3 kN
Maximum Dig Depth	89 mm

## BACKHOE PERFORMANCE

Standard Bucket Type (referenced)	General Purpose
Heaped Capacity ISO (referenced)	0.2 m <sup>3</sup>
Standard Bucket Width (referenced)	610 mm
Maximum Dig Depth	4,440 mm
Reach From Swing Pivot at Ground	5,443 mm
Turning Angle of Bucket	186°
Bucket Digging Force	58.2 kN
Dipper Digging Force, standard stick	37.5 kN
Loading Height	3,586 mm
Loading Reach from Swing Pivot	3,007 mm

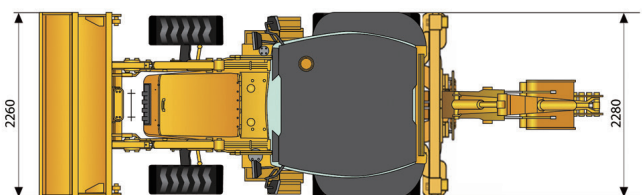
## SERVICE CAPACITIES

Fuel Tank	130 L
Engine Oil	13 L
Cooling System	15 L
Hydraulic Reservoir	130 L
Hydraulic System Total	170 L
Transmission and Torque Converter	16 L
Axle, front	6.9 L
Axle, rear	16 L

## STANDARD EQUIPMENT

Weichai WP4G95E221 Engine	Enclosed Cab, ROPS / FOPS, with AC
Carraro Transmission	Rotary Beacon
Open Cab, ROPS / FOPS	Hydraulic Shear
Auxiliary Hydraulic Kit	Vibratory Tamper
Carraro 4 x 2 Axles	Hydraulic Hammer
Boom Interlock	Carraro 4 x 4 Axles
General Bucket 1.0 m <sup>3</sup>	4 in 1 Bucket 1.0 m <sup>3</sup>
Seat Belt	Telescopic Boom

## OPTIONAL EQUIPMENT



Unit:mm

Guangxi Liugong Machinery Co., Ltd.

No. 1 Liutai Road, Liuzhou, Guangxi 545007, PR China  
T: +86 772 3886124 E: overseas@liugong.com  
www.liugong.com

Specifications and designs are subject to change without notice. Machines shown may include optional equipment. Liugong standard and optional equipment may vary from region to region. Please consult your Liugong dealer for information specific to your area. Engine power kW is converted to horsepower (1 kW=1.3596 ps and 1 kW=1.3410 hp) in this file.

04/2020 Designed by LiuGong  
Replace the previous versions of 06/2019