



Engine	Weichai WP10G178E355
Gross Power	131 kW (176 hp / 178 ps) @ 1,850 rpm
Net Power	120 kW (161 hp / 163 ps) @ 1,850 rpm
Maximum Torque	830 N · m
Blade Capacity	4.5 m ³
Operating Weight	17,000 kg

B160C BULLDOZER

B160C SPECIFICATIONS >>>

ENGINE

Emission Regulation	Tier3/Stage III
Make	Weichai
Model	WP10G178E355
Gross Power	131 kW (176 hp / 178 ps) @ 1,850 rpm
Net Power	120 kW (161 hp / 163 ps) @ 1,850 rpm
Maximum Torque	830 N · m
Number of Cylinders	6
Aspiration	Turbocharged
Displacement	9.726 L

TRANSMISSION

Transmission Type	Power shift
Maximum Travel Speed, fwd	9.72 km/h
Maximum Travel Speed, rev	12.64 km/h
Number of Speeds, fwd	3
Number of Speeds, rev	3

ELECTRICAL SYSTEM

System Voltage	24 V
----------------	------

UNDERCARRIAGE

Shoe Width	510 mm
Number of Shoes per Side	37
Number of Upper Rollers per Side	2
Number of Bottom Rollers per Side	6
Shoe Ground Pressure	67 kPa
Ground Clearance	400 mm

GPS and SAFETY EQUIPMENT

LiuGong iLink (GPS)
Specially designed ROPS/FOPS cab provide operating comfort, excellent visibility, and reliability

OPERATING WEIGHTS

Operating Weight with Ballast	17,000 kg
-------------------------------	-----------

BLADE PERFORMANCE

Blade Type (referenced)	Straight
Blade Capacity (referenced)	4.5 m³
Blade Depth below Ground	540 mm
Blade Lift above Ground	1,076 mm
Blade Tilt (left)	470 mm
Blade Tilt (right)	470 mm

HYDRAULIC SYSTEM

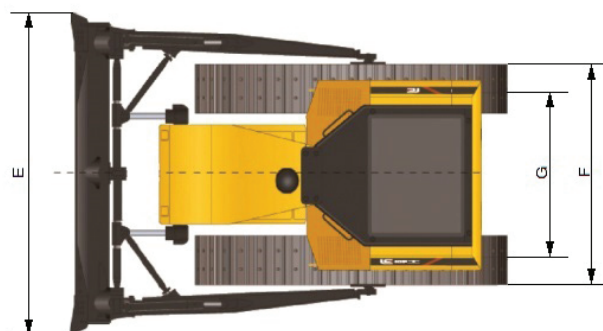
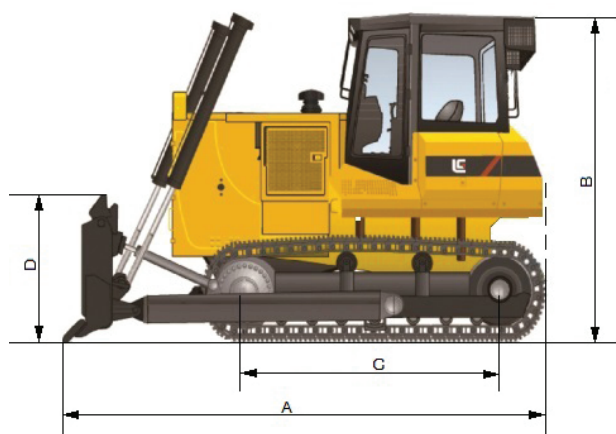
Flow	250 L/min
Pressure	14 MPa
Pump	Gear pump
Cylinders	Dual-acting piston type

SERVICE CAPACITIES

Fuel Tank	350 L
Engine Oil	24 L
Cooling System	62 L
Hydraulic System Total	108 L
Transmission and Torque Converter	122 L
Final Drives, each (two sides)	66 L

DIMENSIONS

A Overall Length	5,180 mm
B Height to Top of Cab	3,200 mm
C Track Length on Ground	2,430 mm
D Blade Height	1,130 mm
E Blade Width	3,420 mm
F Width over Track	2,390 mm
G Track Gauge	1,880 mm



Guangxi Liugong Machinery Co., Ltd.

No. 1 Liutai Road, Liuzhou, Guangxi 545007, PR China
T: +86 772 3886124 E: overseas@liugong.com
www.liugong.com

Specifications and designs are subject to change without notice. Machines shown may include optional equipment. LiuGong standard and optional equipment may vary from region to region. Please consult your LiuGong dealer for information specific to your area. Engine power kW is converted to horsepower (1 kW=1.3596 ps and 1 kW=1.3410 hp) in this file.

04/2025 Designed by LiuGong

Replace the previous versions of 09/2023

- Specified figures have a tolerance of $\pm 5\%$.
- All specifications may be changed without notice.
- Specified figures are in SI Units, followed by their equivalent English units of measurement in ().