



<b>Engine</b>	LiuGong Cummins
<b>Gross Power</b>	179 kW (240 hp / 243 ps) @ 2,000 rpm
<b>Net Power</b>	169 kW (227 hp / 230 ps) @ 2,000 rpm
<b>Maximum Torque</b>	1,050 N·m
<b>Blade Capacity</b>	7.8 m <sup>3</sup>
<b>Operating Weight</b>	24,540 kg

# B230 BULLDOZER

# B230 SPECIFICATIONS >>>

## ENGINE

Emission Regulation	Tier 1 / Stage I
Manufacturer	LiuGong Cummins
Model	LiuGong Cummins
Gross Power	179 kW (240 hp / 243 ps) @ 2,000 rpm
Net Power	169 kW (227 hp / 230 ps) @ 2,000 rpm
Peak Torque	1,050 N · m @ 1,400 rpm
Number of Cylinders	6
Aspiration	Turbocharged
Displacement	14 L

## TRANSMISSION

Transmission Type	Power shift
Maximum Travel Speed, fwd	12 km/h
Maximum Travel Speed, rev	13.8 km/h
Number of Speeds, fwd	3
Number of Speeds, rev	3

## ELECTRICAL SYSTEM

System Voltage	24 V
----------------	------

## UNDERCARRIAGE

Shoe Width	560 mm
Number of Shoes per Side	39
Number of Upper Rollers per Side	2
Number of Bottom Rollers per Side	7
Shoe Ground Pressure	76 kPa
Track on Ground	2,840 mm

## DIMENSIONS

A Overall Length	5,500 mm
B Height to Top of Cab	3,380 mm
C Track Length on Ground	2,840 mm
D Blade Height	1,395 mm
E Blade Width	3,725 mm
F Width over Track	2,560 mm
G Track Gauge	2,000 mm

## HYDRAULIC SYSTEM

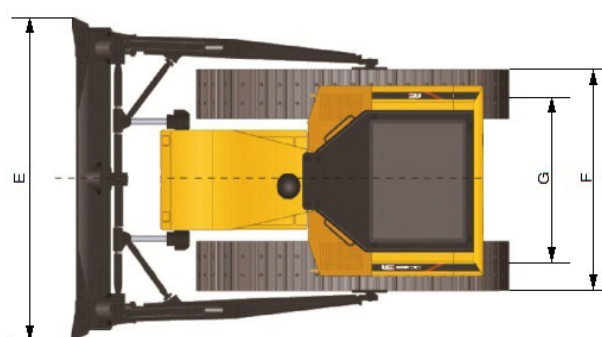
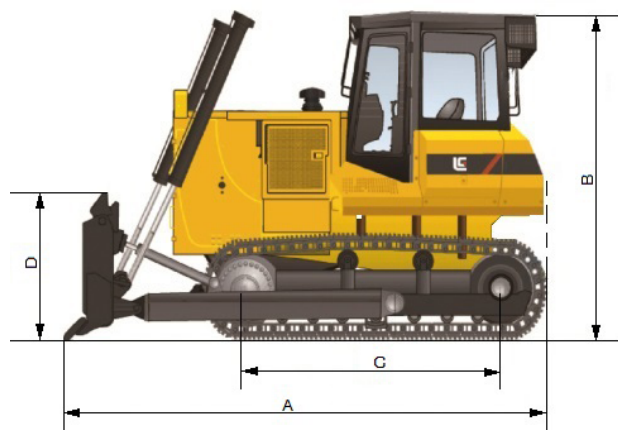
Flow	198 L/min
Pressure	19.5 MPa

## BLADE PERFORMANCE

Blade Type (referenced)	Straight
Blade Capacity (referenced)	7.8 m <sup>3</sup>
Blade Width	3,725 mm
Blade Height	1,395 mm
Blade Depth below Ground	540 mm
Blade Lift above Ground	1,210 mm
Blade Tilt	735 mm

## SERVICE CAPACITIES

Fuel Tank	480 L
Engine Oil	45 L
Cooling System	79 L
Hydraulic System Total	110 L
Transmission and Torque Converter	122 L
Final Drives, each	82 L



Guangxi Liugong Machinery Co., Ltd.

No. 1 Liutai Road, Liuzhou, Guangxi 545007, PR China  
T: +86 772 3886124 E: overseas@liugong.com  
www.liugong.com

Specifications and designs are subject to change without notice. Machines shown may include optional equipment. LiuGong standard and optional equipment may vary from region to region. Please consult your LiuGong dealer for information specific to your area. Engine power kW is converted to horsepower (1 kW=1.3596 ps and 1 kW=1.3410 hp) in this file.

Designed by LiuGong