



Engine	Cummins QSB4.5
Rated Power	97 kW (130 hp / 132 ps) @ 2,200 rpm
Net Power	89.5 kW (120 hp / 122 ps) @ 2,200 rpm
Maximum Digging Depth	4,912 mm
Standard Bucket Capacity	0.58 m ³
Operating Weight	14,600 kg

W915E EXCAVATOR

W915E SPECIFICATIONS >>>

ENGINE

Emission Regulation	Tier 3 / Stage IIIA
Manufacturer	Cummins
Model	QSB 4.5
Rated Power	97 kW (130 hp / 132 ps) @ 2,200 rpm
Net Power	89.5 kW (120 hp / 122 ps) @ 2,200 rpm
Peak Torque	620 N·m @ 1,500 rpm
Number of Cylinders	4
Displacement	4.5 L

UNDERCARRIAGE

Maximum Travel Speed, fwd	30 km/h
Maximum Travel Speed, rev	30 km/h
Drawbar Pull	90 kN
Front Axle Oscillation	±6.5°
Turn Angle	35°
Turning Radius	7,000 mm
Tire Size	10.00-20
Wheel Base	2,800 mm
Wheel Track	1,944 mm

HYDRAULIC SYSTEM

Main Pumps Total Flow	2 × 175 L/min
Relief Pressure, main	34.3 MPa
Relief Pressure, boost	37.3 MPa

SWING SYSTEM

Swing Speed	11 rpm
-------------	--------

DIMENSIONS

Blade Height	560 mm
Blade Width	2540 mm

REFERENCE ARM

Arm Length	2,100 mm
Arm Breakout Force, max, ISO	73.9 kN

WORKING RANGES

Maximum Dig Depth	4,912 mm
Maximum Reach	7,981 mm
Reach at Ground Level	7,786 mm
Depth of 8' Level Bottom	4,665 mm
Maximum Dig Height	8,830 mm
Dump Height	6,346 mm
Maximum Dig Depth of Vertical Wall	4,324 mm

BUCKET PERFORMANCE

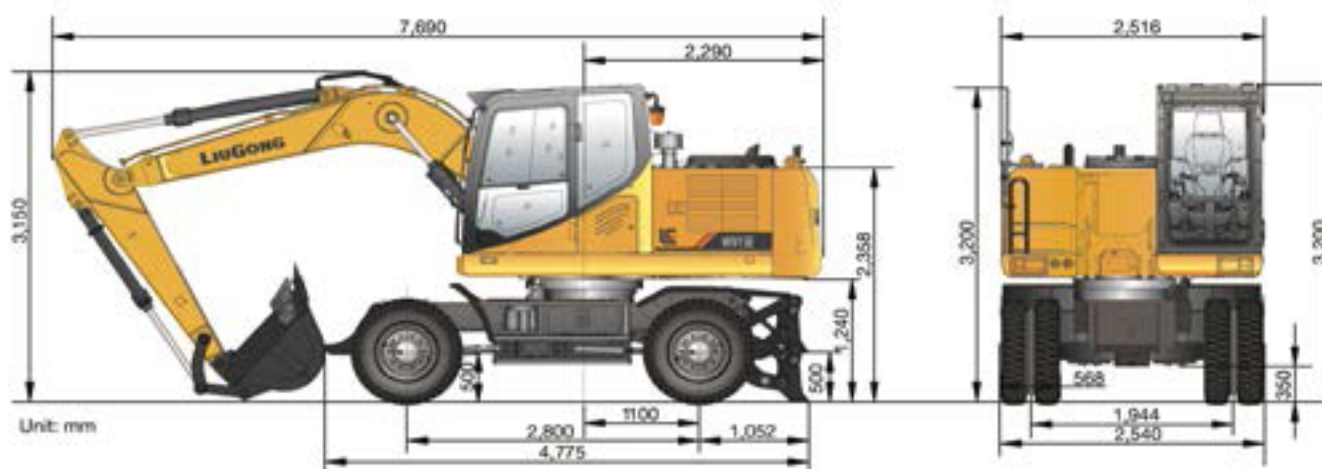
Standard Bucket Heaped Capacity (Referenced)	0.58 m³
Minimum Heaped Capacity of Bucket Options	0.36 m³
Maximum Heaped Capacity of Bucket Options	0.58 m³
Bucket Breakout Force, max, ISO	92.8 kN

SERVICE CAPACITIES

Fuel Tank	260 L
Engine Oil	16 L
Cooling System	21 L
Hydraulic Reservoir	120 L
Hydraulic System Total	200 L

TRANSMISSION

Number of Speed, fwd	2
Number of Speed, Rev	2



Guangxi Liugong Machinery Co., Ltd.

No. 1 Liutai Road, Liuzhou, Guangxi 545007, PR China

T: +86 772 3886124

E: overseas@liugong.com

www.liugong.com

Specifications and designs are subject to change without notice. Machines shown may include optional equipment. Liugong standard and optional equipment may vary from region to region. Please consult your Liugong dealer for information specific to your area. Engine power kW is converted to horsepower (1 kW=1.3596 ps and 1 kW=1.3410 hp) in this file.

02/2021 Designed by Liugong
Replace the previous versions of 11/2020