



Engine	Cummins QSL 9.3
Gross Power	154 kW (207 hp / 209 ps) @ 2,000 rpm
Net Power	142 kW (190 hp / 193 ps) @ 2,000 rpm
Blade Capacity	3.7 m ³
Operating Weight	20,000 kg
Blade Lift Height	1,100 mm
Blade Digging Depth	564 mm

LD20DL BULLDOZER

LD20DL SPECIFICATIONS >>>

ENGINE

Model	Cummins QSL 9.3
Emission Regulation	Tier 3
Gross Power @ RPM (ISO 9249)	154 kW (207 hp / 209 ps) @ 2,000 rpm
Net Power @ RPM (ISO 9249)	142 kW (190 hp / 193 ps) @ 2,000 rpm
Peak Torque	1,000 N·m
Number of Cylinders	6
Displacement	9.3 L
Aspiration	EFI turbocharged, air-to-air intercooled
Cooling Type	Water

ELECTRICAL SYSTEM

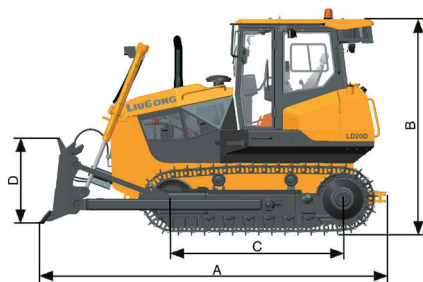
System Voltage	24 V
Alternator Output	70 amps
Battery Rating	120 amp-hr
Battery CCA	850 amp-hr
No. of Batteries	2

DRIVE TRAIN

Transmission	Power shift
Torque Converter	3 element - single stage, single phase
Maximal Travel Speed, fwd	10.6 km / h
Maximal Travel Speed, rev	12.6 km / h
No. of Gears	3 forward and 3 reverse

UNDERCARRIAGE

Shoe Width	1,100 mm
No. of Shoes (each)	44
No. of Upper Rollers (each)	2
No. of Bottom Rollers (each)	7
Link Pitch	203.2 mm
Ground Pressure	25.3 kPa
Ground Clearance	420 mm
Track Tension Adjustment	Grease



HYDRAULIC SYSTEM

System Type	Open
Main Pump Type	Duplex gear pump
Main Pump Flow (total)	169 L/min
Relief Pressure, Main Pump	17.5 MPa

BLADE

Blade Type	Straight
Blade Capacity	3.7 m ³
Blade Digging Depth	564 mm
Blade Lift Height	1,100 mm
Blade Maximum Tilt, Left / Right	445 / 470 mm

DIMENSIONS

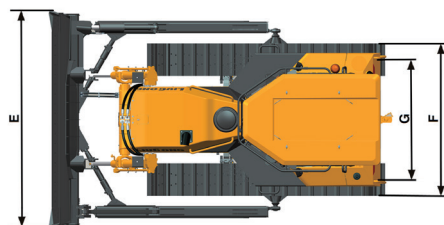
A Overall Length	5,535 mm
B Height to Top of Cab	3,312 mm
C Track Length on Ground	3,140 mm
D Blade Height	1,055 mm
E Blade Width	4,277 mm
F Width over Track	3,400 mm
G Track Gauge	2,300 mm

OPERATING WEIGHTS

Operating Weight	20,000 kg
------------------	-----------

SERVICE CAPACITIES

Fuel Tank	420 L
Engine Oil	24 L
Cooling System	45 L
Hydraulic Oil Tank	100 L
Transmission, Torque Converter & Rear Frame	110 L
Final Drives (each)	45 L



Guangxi Liugong Machinery Co., Ltd.

No. 1 Liutai Road, Liuzhou, Guangxi 545007, PR China
T: +86 772 3886124 E: overseas@liugong.com
www.liugong.com

Specifications and designs are subject to change without notice. Machines shown may include optional equipment. Liugong standard and optional equipment may vary from region to region. Please consult your Liugong dealer for information specific to your area. Engine power kW is converted to horsepower (1 kW=1.3596 ps and 1 kW=1.3410 hp) in this file.

07/2025 Designed by LiuGong

LD20D series selling points

- ◆ **High efficiency and energy saving**
- **Heavy-duty working conditions:** 10% increase in productivity compared to C series; 7%-16% reduction in overall fuel consumption per unit of earthwork
- **Light load working conditions:** 25-30% higher productivity compared to C series; about 20% lower fuel consumption per unit of earthwork

Overall appearance Leading the industry

- LiuGong new generation bulldozer appearance

Strong power

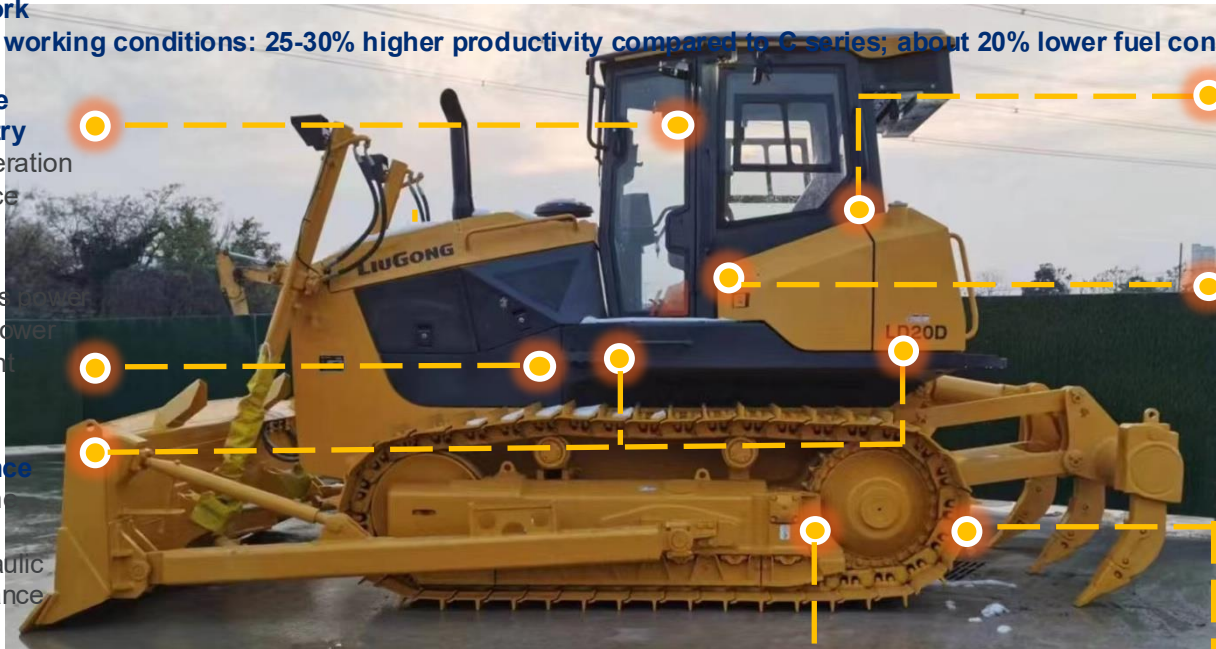
- Dedicated Cummins power
- Customized multi-power curve to meet different working conditions

Easy maintenance

- One-stop engine maintenance
- One-stop hydraulic system maintenance

New chassis is more reliable

- New pivot cart design, which guarantees more reasonable and reliable force on transmission parts.
- One-piece cart frame and main frame, with enhanced strength and more reliable chassis



Relaxed Comfortable

- The field of vision is wide, 290 degrees without dead angle,
- The quietest luxury cab in the domestic industry, 82dBA;
- Double pilot operation, easy and comfortable

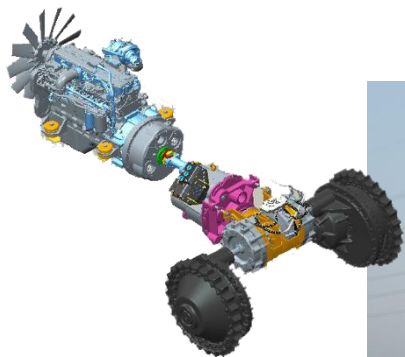
Clarity intelligent

- 7-inch LCD display shows the whole machine information in real time, more worry-free
- Gear preset function, more convenient
- Automatic downshifting function, more secure
- Intelligent housekeeper, control with confidence

Modular drive technology

- Modular technology of core transmission parts from Europe, higher reliability and easier maintenance

LiuGong's new bulldozer shape leads a new bulldozer concept



Modular design of the drive chain



Pilot control



Rear integrated air conditioner

Extra large fuel tank

Pivot chassis design

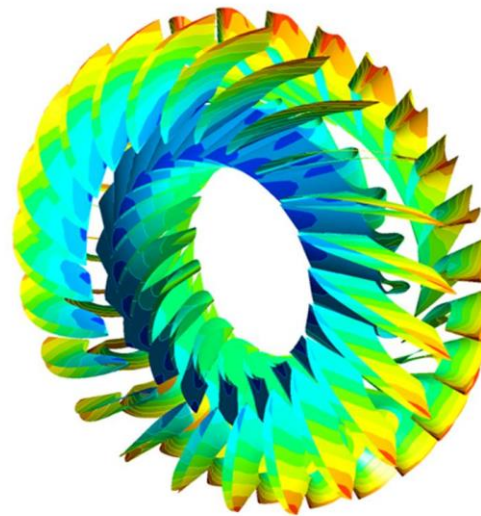
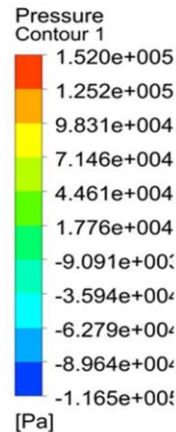
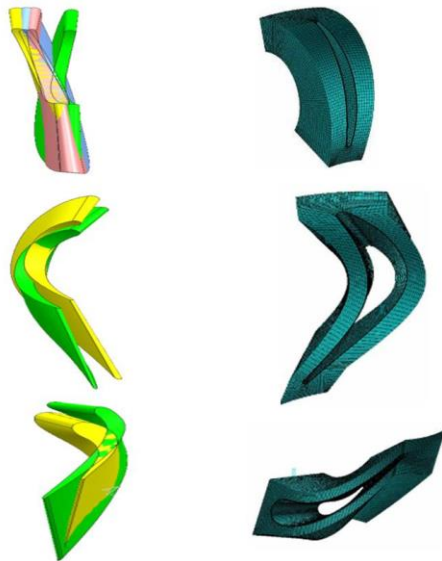
High efficiency Fuel saving——Engine

Model	QSL9.3
Displacement	9.3 L(6 cylinders, 4 valves)
Power	Energy-saving mode: 154/1600r/min High efficiency mode: 154/1900r/min
Max. torque	1000N.m \pm 5% /1200 r/min
Lowest ratio fuel consumption	189 g/kWh
Air intake	Turbocharged air cooler
Emission Regulation	China Off-Road Stage III European Stage IIIA (same platform can be continuously upgraded to higher stages)
Length	1128 mm
Width	805 mm
Height	1085 mm
Wet weight	770 kg



- QSL9.3 electronically controlled engine, high pressure common rail, precise combustion control, high efficiency and fuel saving, bringing higher economic benefits to customers.
- Different power modes selectable, with more sufficient power and more energy for the whole machine.
- Satisfy China's non-road stage 3 emission standard.
- Liugong exclusive customization, reliability is guaranteed.
- Satisfy the long time heavy load operation of construction machinery, can cope with various harsh working conditions

High efficiency Fuel saving——Engine

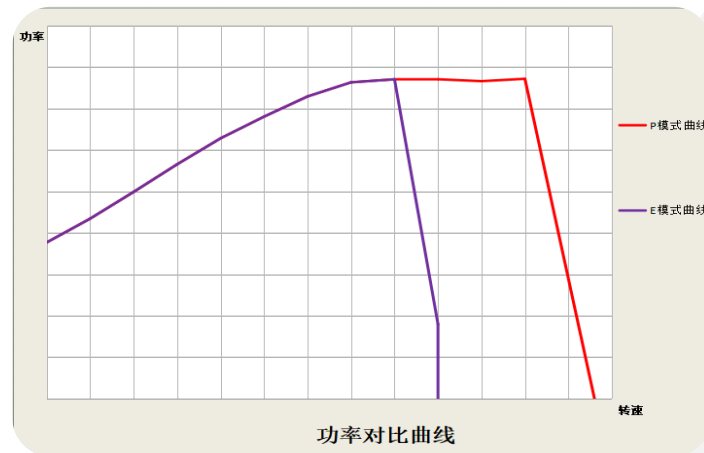
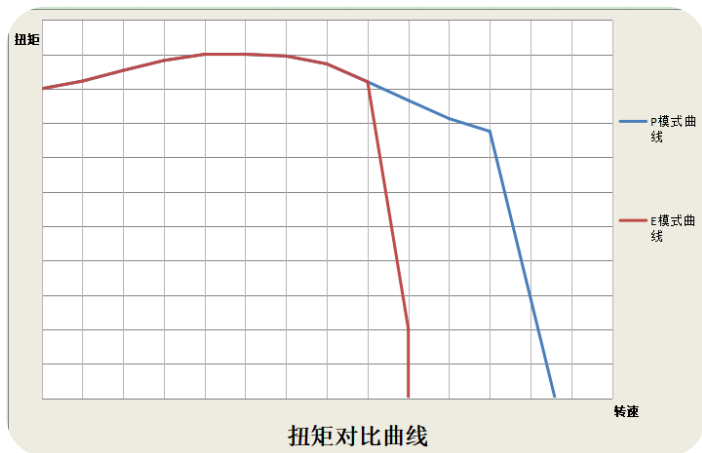


Cummins - **exclusive power** for LiuGong bulldozers + **exclusive torque converter** for LiuGong bulldozers.

Heavy-duty working conditions: 10% increase in productivity compared to C series; 7%-16% reduction in overall fuel consumption per unit of earthwork

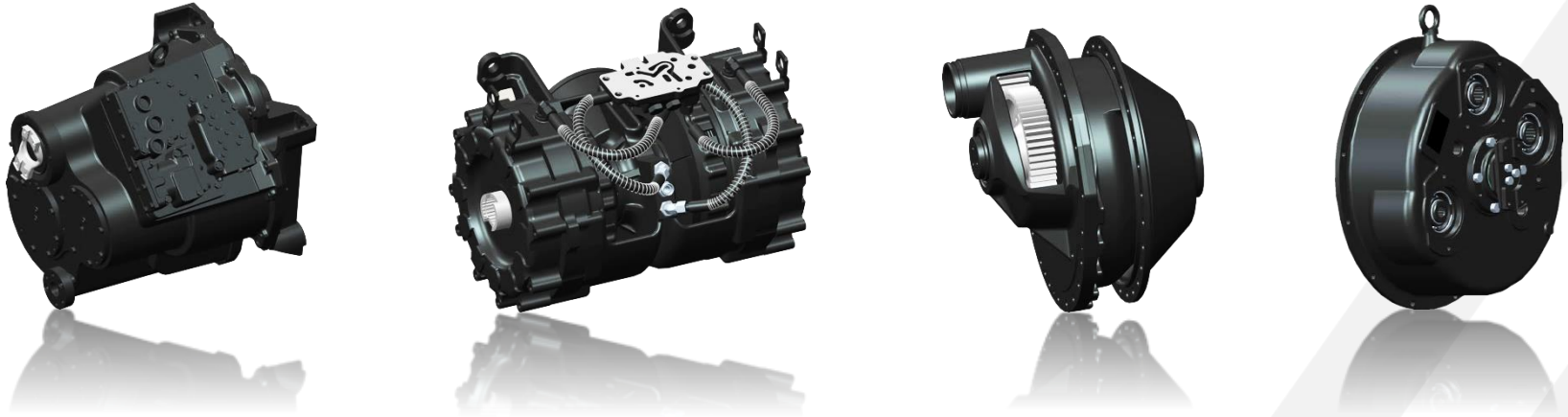
Light load: 25-30% increase in productivity compared to C series; 20% reduction in fuel consumption per unit of earthwork

High efficiency Fuel saving——Engine



The LD20D bulldozer special selectable torque curve developed by LiuGong and Cummins can select high and low torque output according to working conditions, thus ensuring lower fuel consumption, and has applied for patent of invention

High reliability —modular transmission components



The torque converter, transmission, steering drive and final drive adopt modular design to ensure higher reliability and maintainability, etc. The current amount of manufacturers using modular design are: Cat, Komatsu, John Deere, all international first-class bulldozer manufacturers.

Gear Preset

- Definition:** gear preset - system customization of several common gear operations, the driver can lock the travel mode by selecting the corresponding preset gear through shortcut keys.
- Advantages:** avoiding frequent gear switching when the machine is moving forward or backward, reducing work intensity and improving reliability.
- Features:** gear preset once selected that is fixed in such operating gear, then the manual mode gear selection and automatic downshift function is invalid.
- The current preset gears**



Preset gears

F1 R2

F2 R2

F1 R3

F2 R3

The above gear preset modes can be combined at will according to the user's operating habits

Products introduction of LD20D



The appearance design from Liugong British Industrial Design Institute is cool and subverts the tradition. The polishing of each corner conveys the spirit and blood of Liugong.

Item	Model	Unit	Parameter
Size	LD20D	mm	5370×3422×3312
	LD20DL	mm	5530×4280×3312
BD Work quality	LD20D	kg	17500
	LD20DL	kg	20000
Engine power	LD20D	kW	154
	LD20DL	kW	154
Blade capacity	LD20D	m³	3.3
	LD20DL	m³	3.7
Max lifting height	LD20D	mm	1100
	LD20DL	mm	1100
Max cutting depth	LD20D	mm	510
	LD20DL	mm	564
Ground pressure	LD20D	kPa	63
	LD20DL	kPa	28



**LiuGong exclusive power -
QSL9.3 engine**



Integral welded main frame



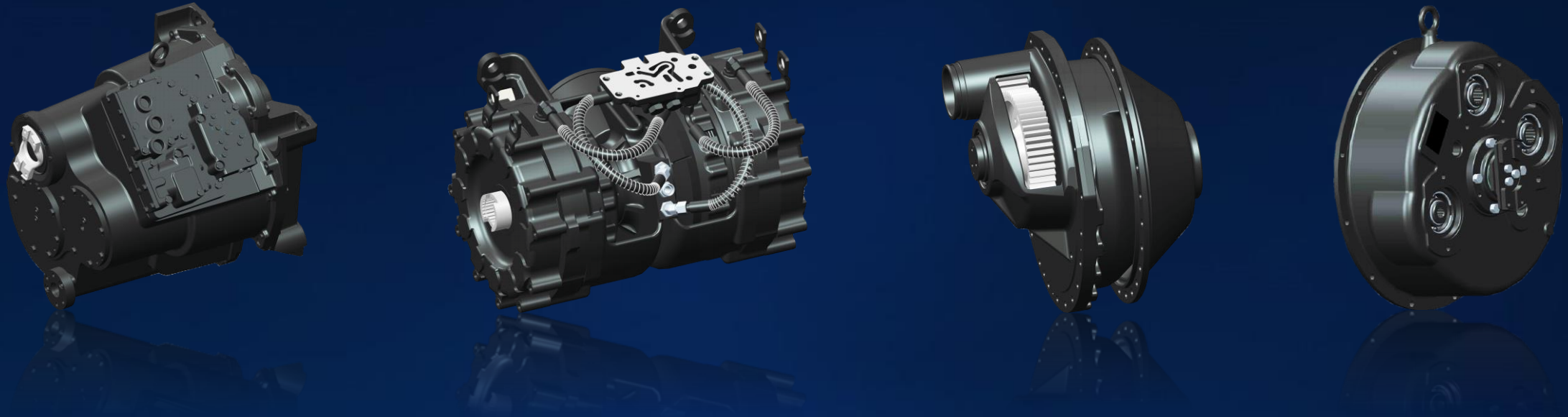
ROPS/FOPS



**Equipped with high seal
pressurized cab**

**Blade optimization: The capacity of
dry and wetland type blades is
respectively 4.3m³ and 4.5m³.**

High reliability ——modular transmission components



The hydraulic torque converter, gearbox, central transmission and final transmission adopt modular design to ensure higher reliability and maintainability. At present, Manufacturers adopting modular design include Caterpillar, Komatsu and John Deere, and all are world-class BD manufacturers.

Luxurious and comfortable——Cab



- Equipped with luxury interiors with European design standards, the current situation of poor and low-end interiors in the cab of domestic bulldozers has been changed. All, including radios, cigarette lighters and USB charging ports etc. , reach the world-class level;
- The cab adopts 4-point silicone oil shock absorption, the vibration isolation rate reaches 92%, and the driving comfort is comprehensively improved;

Luxurious and comfortable——Cab



- The highly sealed and pressurized cab has all-round noise reduction design. The noise in the driver's ear is only 82 dB, ranking first in the industry. (Long term exposure to 90-100 dB will cause irreversible damage to hearing, while the noise in the ears of drivers of domestic mainstream products is generally about 92 dB);
- 290 °panoramic cab, which is more than 10 ° higher than the current mainstream products;
- The cab doors and windows can be equipped with wipers;

High Efficiency Operation —Hydraulic System

The system pressure is 17.5MPa, the maximum lifting force and lifting speed are more advantageous, and the operation is efficient.



High pressure and high strength oil cylinder

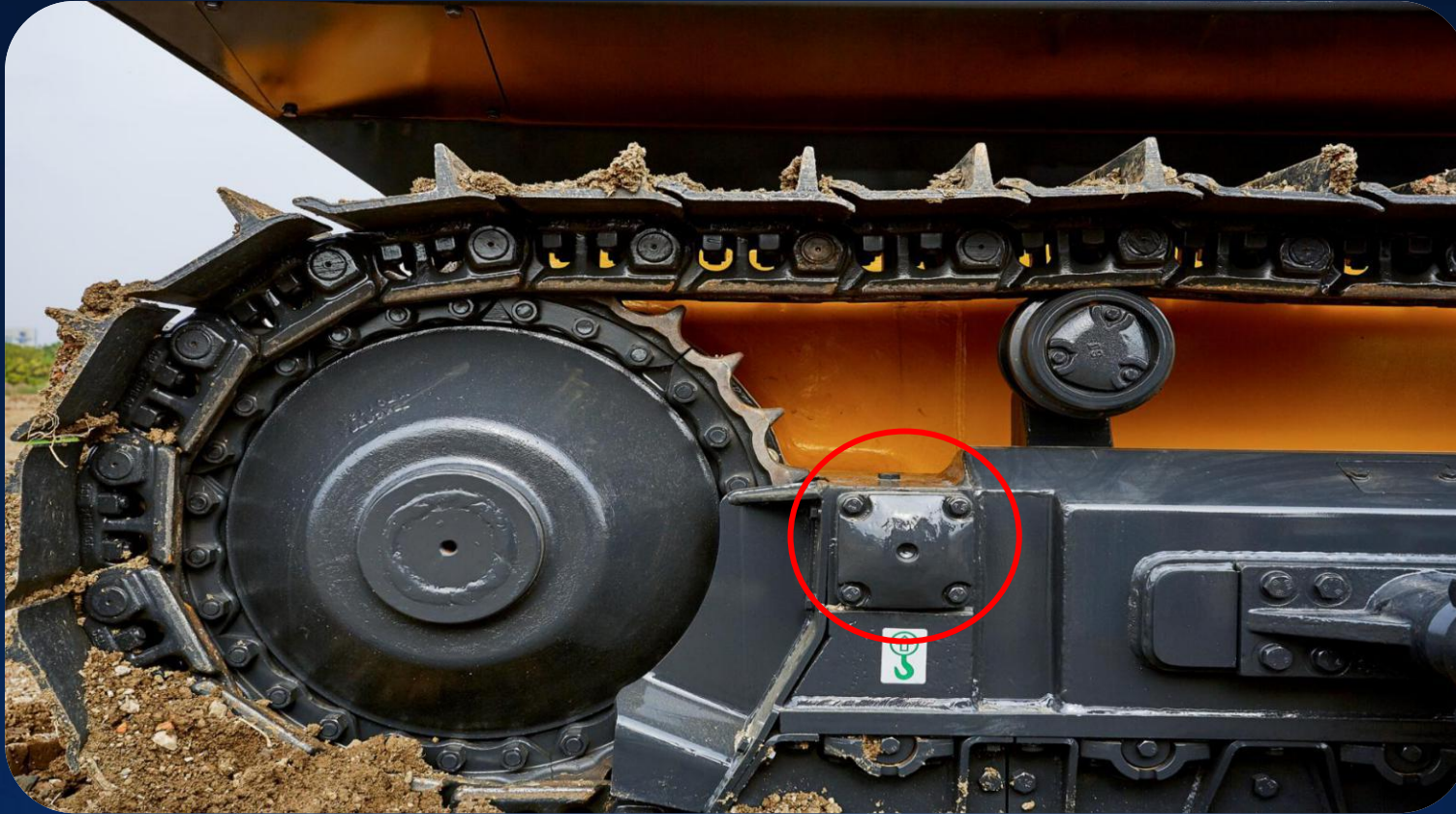
- Manufacture by HENGLI, reliable quality
- The piston rod is welded by pressure friction, 42CrMo material is used for chromium plating to adapt to harsh working conditions
- Cylinder seal from Trelleborg, Oil cylinder buffer structure from Dressta, Stable performance.



Hydraulic oil tank

- Large volume hydraulic oil tank, no hidden danger of respirator oil leakage
- The circular cleaning port at the lower end of the wing plate is convenient and thorough
- Built in oil return filter , convenient maintenance

Advanced Transmission Method —Pivot



The traditional splayed beam structure is canceled and more advanced pivot design is used. The pivot bears the bulldozing force, and the final drive only transmits torque. It is more stable than the chassis of the traditional splayed beam half shaft structure, and the service life of the final drive is longer.

Gear preset

Definition: gear preset - the system customizes several common gear operations. The driver can lock the walking mode as long as he selects the corresponding preset gear through the shortcut key;

Advantages: it avoids the frequent gear switching when moving forward or backward, reduces the working intensity and improves the reliability;

Features: once the gear preset is selected, it is fixed in this operating gear. At this time, the manual mode gear selection and automatic downshift functions are invalid;

Current preset gear

Preset gears
F1R2
F2R2
F1R3
F2R3



The gear preset mode can be combined arbitrarily according to the user's working habits.

Fault monitoring



During the operation of the machine, if any faults and alarms are encountered, they can be viewed through the instrument, which is convenient for troubleshooting and maintenance of the machine, and it is more convenient to use.